



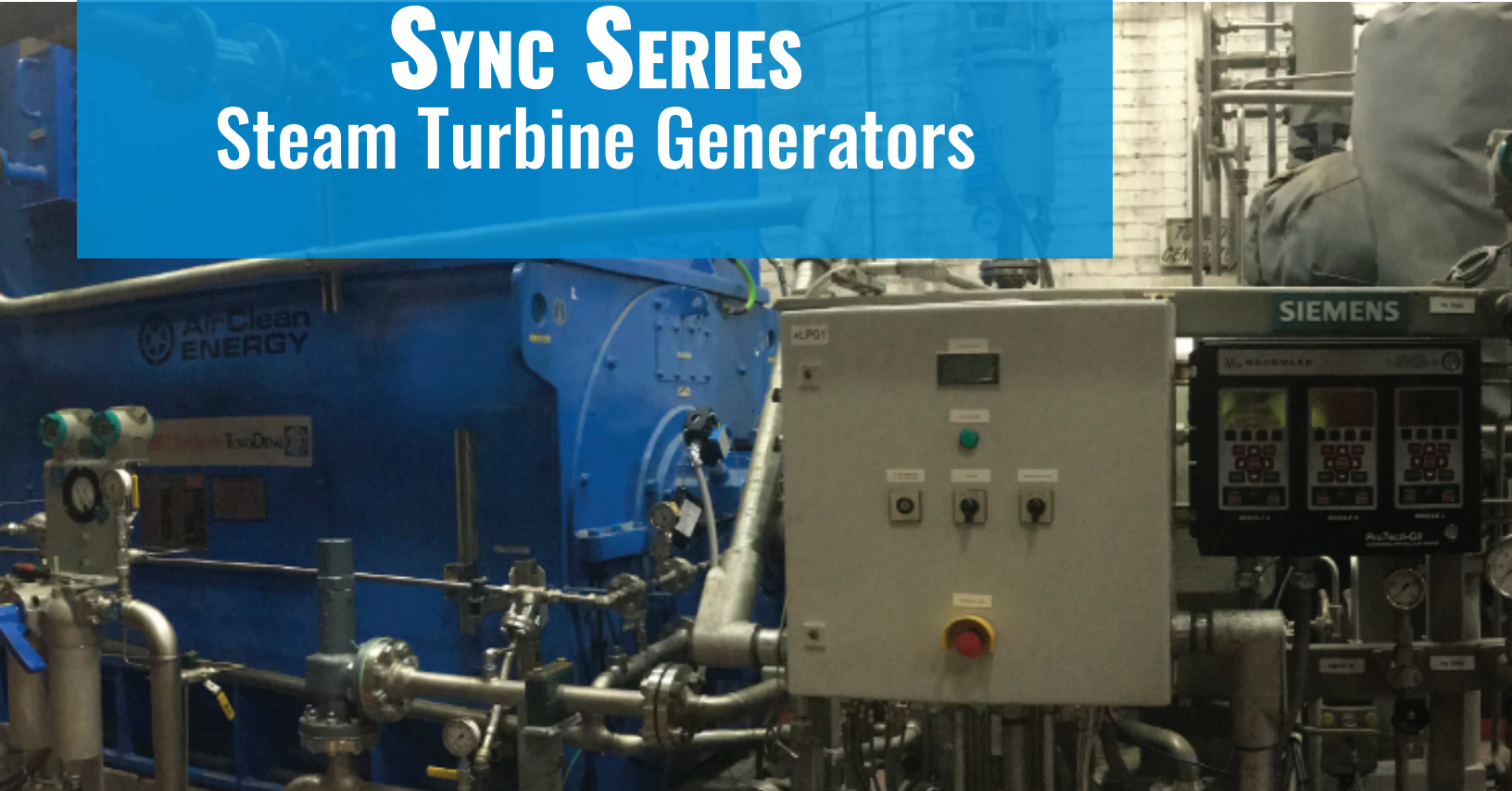
AirClean ENERGY

☎ 206.860.4930

📍 www.aircleanenergy.com

✉ sales@aircleanenergy.com

SYNC SERIES Steam Turbine Generators



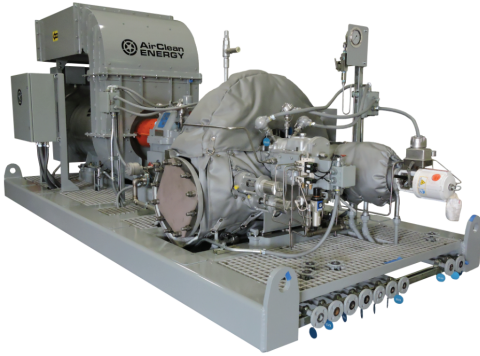
AirClean's Sync Series offers higher turbine efficiency by adding a gearbox between the turbine and the generator. This allows the turbine speed to be optimized for maximum power production, offering superior efficiency and control. The inclusion of a synchronous generator allows the unit to operate in isolation from the grid. Our units are customized for your facility and packaged for easy installation. They include control systems designed for intuitive operator interaction and use PLC-based monitoring systems for vibration, temperature and overspeed trips. In most cases, our systems pay for themselves within two to five years.

DESIGN FEATURES

- Integral gearbox
- Pre-wired to junction box
- Pre-piped drains & cooling lines
- Integral oil reservoir & oil pumps
- Fully integrated control system
- Remote monitoring capable
- UL, CSA or EU listed controls

Contact us to discuss your unique system!

Sync-CG



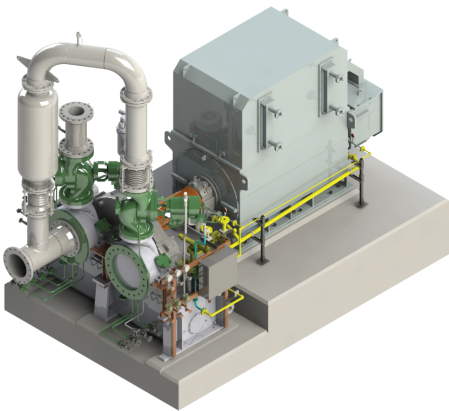
Power Generation Capacity	Up to 2,500 kWe
Voltage	480 VAC / 4,160 VAC / 13,500 VAC
Power Factor	Set between 0.4 and 1.0
Inlet Pressure	Up to 900 psig
Inlet Temperature	Up to 900°F
Footprint	7' x 15' (typical)
Weight	14,000 lb (typical)

Sync-IG-1



Power Generation Capacity	Up to 6,000 kWe
Voltage	480 VAC / 4,160 VAC / 13,500 VAC
Power Factor	Set between 0.4 and 1.0
Inlet Pressure	Up to 1900 psig
Inlet Temperature	Up to 950°F
Footprint	15' x 25' x 15' tall (typical)
Weight	Turbine – 20,000 lb, Generator – 35,000 lb

Sync-IG-2



Power Generation Capacity	Up to 7,000 kWe
Voltage	480 VAC / 4,160 VAC / 13,500 VAC
Power Factor	Set between 0.4 and 1.0
Inlet Pressure	Up to 1900 psig
Inlet Temperature	Up to 950°F
Footprint	15' x 25' x 15' tall (typical)
Weight	Turbine – 28,000 lb, Generator – 35,000 lb